



## **Articulation Agreement**

Southern New Hampshire University – College of Online and Continuing Education  
and  
Prince George’s Community College

### **I. PURPOSE**

Southern New Hampshire University (SNHU) and Prince George’s Community College, in the spirit of academic cooperation, and in order to facilitate the transfer of graduates of Prince George’s Community College to Southern New Hampshire University - College of Online and Continuing Education (SNHU-COCE), hereby do enter into an academic articulation agreement. Successful implementation of the Agreement is dependent upon communication of its content to all involved participants and the assumption of responsibility by both institutions for such communications.

### **II. TRANSFER PATHWAY(S)**

1. As SNHU is regionally accredited, all academic course work in which a student has earned a grade of “C-” or higher is fully transferable based on the attached course equivalents. Up to 90 credits may be accepted in transfer toward a bachelor degree program.
2. **Based on the course equivalency tables attached (see Appendix 1),** SNHU College of Online and Continuing Education guarantees transferability of all credits outlined in the following Prince George’s Community College associate's degrees to their corresponding SNHU-COCE bachelor's degrees:

AAS Criminal Justice to BS Criminal Justice  
AAS Cybersecurity to BS Cybersecurity  
AA General Studies to BA General Studies  
AA General Studies Business Administration to BS Business Administration  
AA General Studies Communication/Public Relations/Journalism to BA Communication  
AA General Studies Computer Science to BS Computer Science  
AA General Studies Psychology to BA Psychology  
AA General Studies Sociology to BA Sociology  
AAS Human Services to BA Human Services  
AS Nursing to BS Nursing



3. Any students enrolling at SNHU College of Online and Continuing Education may transfer up to 90 credit hours for a bachelor's with unlimited CLEP, DANTES and Excelsior, military training (based upon a transcript from the American Council on Education (ACE), College Credit Recommendation Service or Community College of the Air Force (CCAF) transcript) and ACE or National College Credit Recommendation Service (NCCRS) credits - providing students meet residency requirements. Transfer credit is awarded based on degree program requirements. Residency requirements equate to 30 credit hours or ten classes.

### III. TERMS

1. Because of this agreement to articulate, and provided the individual Prince George's Community College on his or her application form, eligible graduates, employees and the immediate family of employees (spouses, domestic partners, children, siblings and parents) will receive a ten (10%) percent tuition reduction in Southern New Hampshire University - College of Online and Continuing Education, applicable as of the date this Agreement is fully executed by the parties below. In addition, those eligible graduates, employees and immediate family of employees who enroll in Southern New Hampshire University's online program will receive a waiver of the application fee normally required by Southern New Hampshire University - College of Online and Continuing Education. No application fee waiver, tuition credit or refund shall be made retroactively for any eligible employee, their family member or alumnus already enrolled at SNHU College of Online and Continuing Education on the date of execution of this Agreement; however, the tuition reduction shall be applied to such eligible employees, their family members or graduates for course enrollments following the execution of this Agreement. Programs offered at military tuition assistance levels are not subject to this reduction. Prince George's Community College employees, their family members and graduates must inform SNHU College of Online and Continuing Education admissions representatives about their affiliation to receive their tuition reduction.

SNHU College of Online and Continuing Education may change its tuition rates at any time at its sole discretion and the reduction will be calculated based on the current tuition in effect for the applicable academic term for the enrolled program. Eligible employees and alumni shall not be entitled to any other reduction and are subject to all other admission and continuation requirements as set forth in the respective Southern New Hampshire University policies and catalogs.

2. Southern New Hampshire University - College of Online and Continuing Education agrees to provide Prince George's Community College, at their request, an annual update of student enrollment, to include general data on how many students have transferred to SNHU College of Online and Continuing Education.



3. This Agreement is effective as of the date of the fully executed document, and shall continue until terminated. Both parties must approve amendments to the Agreement in writing. Either party may terminate the Agreement without cause upon 90 days written notice to the other party. Notwithstanding the foregoing, either party may terminate the Agreement immediately in the event that participation under the Agreement may give rise to a violation of any requirement of federal or state law or regulation or the requirements of any accrediting agency having jurisdiction.
4. Admission criteria, academic requirements, and other admission requirements will be subject to the applicable academic catalog accessed through snhu.edu at the time of the students' admission. Students who have begun their SNHU program of study or students in the process of enrolling prior to the effective date of any without cause termination will be grandfathered in to continue receiving the discount offered in this Agreement until such time such students complete or discontinue enrollment in their program.
5. Transferability of third party course work will be evaluated on a case by case basis.
6. This Articulation Agreement is based on the current curriculum of both educational institutions. Each institution is responsible for notifying the other of any substantive changes to the curriculum. This agreement shall be reviewed by both institutions annually.
7. The parties grant to each other a non-exclusive, non-transferable license to use each other's trademarks and servicemarks in furtherance of the articulation coordination detailed herein or in a manner solely for the purpose of identifying and communicating the existence of the relationship to Prince George's Community College's students and alumni. Use of trademarks, servicemarks and logos will comply with use policies of the originating institution. The parties shall discontinue the use of the licensed marks and return any and all files and materials containing the licensed marks supplied by the owner at termination or expiration of the Agreement. Neither party grants to the other any interest in the other party's trademarks. Should either originating institution request, in writing, that a particular use of the originating institution's trademarks and/or servicemarks be discontinued, the non-originating institution shall cease and desist such use of the trademarks and/or servicemarks.
8. Prince George's Community College agrees to notify students of transfer opportunities to SNHU College of Online and Continuing Education, to collaborate with SNHU College of Online and Continuing Education on other forms of transfer communication and to host SNHU representatives on campus for recruitment activities during the academic school year.



9. The parties hereto will have the relationship of independent contractors for all purposes. Each will have complete control over its own performance and the details for accomplishing its own obligations under this Agreement. In no event will the agents, representatives or employees of one party be deemed to be agents, representatives or employees of the other.
10. This Agreement may be executed by a duly authorized representative of each party, either by electronic or facsimile transmission, each of which will be considered an original.

#### IV. CONTACTS FOR COORDINATION:

All notices and other communications required hereunder by either party to the other shall be in writing, delivered personally, by certified or registered mail, return receipt requested, or by overnight courier, and shall be deemed to have been duly given when delivered personally or received when using overnight courier or three business days after being deposited in the United States mail, postage prepaid, addressed as follows:

If to Southern New Hampshire University:

Gayla Freelon, Assistant Director, Academic Alliances  
Southern New Hampshire University  
College of Online and Continuing Education  
2500 North River Road  
Manchester, NH 03106

If to Prince George's Community College:

Aundrea Wheeler, Assistant Vice President for Curriculum, Programs, and Regulation  
Prince George's Community College  
301 Largo Road  
Largo, MD. 20774

or to such other persons or places as either party may from time to time designate by written notice to the other.

7.19DL



DATE: 8/6/2020

APPROVALS:

DocuSigned by:  
Gregory Fowler  
30526C90B6FF4B6...  
Dr. Gregory Fowler, PhD.  
President, Global Campus  
Southern New Hampshire University

Charlene M. Dukes  
Charlene M. Dukes  
President  
Prince George's Community College

DocuSigned by:  
Jennifer Batchelor  
66453D05999846E...  
Dr. Jennifer Batchelor, PhD.  
Vice President Academic Programs, Global Campus  
Southern New Hampshire University

Clayton A. Railey, III  
Dr. Clayton A. Railey, III  
Executive Vice President and Provost  
Prince George's Community College

DocuSigned by:  
Gayla Freelon  
23EA575AD1F94AD...  
Manager of Agreement  
Gayla Freelon  
Regional Director, Academic Alliances  
Southern New Hampshire University  
College of Online and Continuing Education

## Welcome Valued Partner: *Prince George's Community College*

---

Through the articulation agreement with Southern New Hampshire University, Prince George's Community College receives a number of benefits. This document outlines them and provides further information to staff/students.

### Our Partnership:

- SNHU's Academic Alliance team has partnered with Prince George's Community College to offer additional benefits – particularly tuition discounts – to PGCC students, employees, and immediate family members.
- Through the articulation agreement with Prince George's Community College, SNHU has created several programmatic pathways to provide a seamless transition for PGCC students. The programs include:
  - **AAS Criminal Justice to BS Criminal Justice**
  - **AAS Cybersecurity to BS Cybersecurity**
  - **AA General Studies to BA General Studies**
  - **AA General Studies Business Administration to BS Business Administration**
  - **AA General Studies Communication/Public Relations/Journalism to BA Communication**
  - **AA General Studies Computer Science to BS Computer Science**
  - **AA General Studies Psychology to BA Psychology**
  - **AA General Studies Sociology to BA Sociology**
  - **AAS Human Services to BA Human Services**
  - **AS Nursing to BS Nursing**
- The pathways will be housed on the PGCC landing page at:  
[www.snhu.edu/pgcc](http://www.snhu.edu/pgcc)
- The partnership will extend SNHU's existing academic alliance discount (10% for undergraduate and graduate for COCE) to those individuals affiliated with PGCC (graduates, employees and immediate family members).
  - \$864 per course Under Graduate Programs (\$288 per credit hour)

- \$675 per course UG Military Service Members/Military Spouses (\$225 pch)
- \$1693 per course Graduate Programs (\$564 pch)
- \$1410 per course Grad Military Service Members/Military Spouses (\$470 pch)
- **TOTAL ESTIMATED PROGRAM COST**

The amounts listed below are meant to demonstrate if a student were to bring in the below mentioned credits and their associated cost. It is important to note that each student's transfer experience and the amount of credits transferred over may be different. The cost does not include books and certain other fees, which may or may not apply.

  - If a student brings in 60 credits: \$17,280
  - If a student brings in 90 credits: \$8,640
- There are no application fees.
- Free transcript evaluations.
- SNHU can request/secure past transcripts for students.

## About SNHU

---

Southern New Hampshire University is a private, nonprofit, accredited institution with more than 3,000 on campus students, over 135,000 online students and an alumni network of over 100,000, making it one of the fastest growing universities in the nation. Since its founding in 1932, the University has transformed from a school of accounting and secretarial science into an institution offering over 200 programs, from certificates to doctoral level degrees including business, education, liberal arts, social sciences and STEM. Here are just a few of our accolades:

- Named 2020 Most Innovative University in the North and one of the nation's "Best Regional Universities" by U.S. News & World Report.
- Awarded the 21st Century Distance Learning Award for Excellence in Online Technology by The United States Distance Learning Association (USDLA).
- Named "Great College to Work For" by the Chronicle of Higher Education every year since its inception.
- SNHU offers 200+ online degrees (certificates, bachelors and masters).

- Academic Terms
  - **Undergraduate:** six, 8-week terms per year / Rolling Admissions.
  - **Graduate:** five, 10-week terms per year.

## Contacts

---

### Partnership Contact:

Gayla Freelon, MBA  
Regional Director, Academic Alliances  
[g.freelon@snhu.edu](mailto:g.freelon@snhu.edu)  
603-851-4942

### Marketing & Media Contact:

Melissa Costa  
Channel Marketing Manager  
[m.costa1@snhu.edu](mailto:m.costa1@snhu.edu)

### General Questions:

Email: [academicalliances@snhu.edu](mailto:academicalliances@snhu.edu)

### Applications:

Fill out the free application at: [www.snhu.edu/pgcc](http://www.snhu.edu/pgcc)



Southern  
New Hampshire  
University

A male graduate with a beard, wearing a black graduation cap and gown, is smiling broadly with his arms raised in celebration. He is wearing a blue and yellow sash. The background shows other graduates in a dimly lit arena.

**THERE'S NO  
STOPPING YOU.**

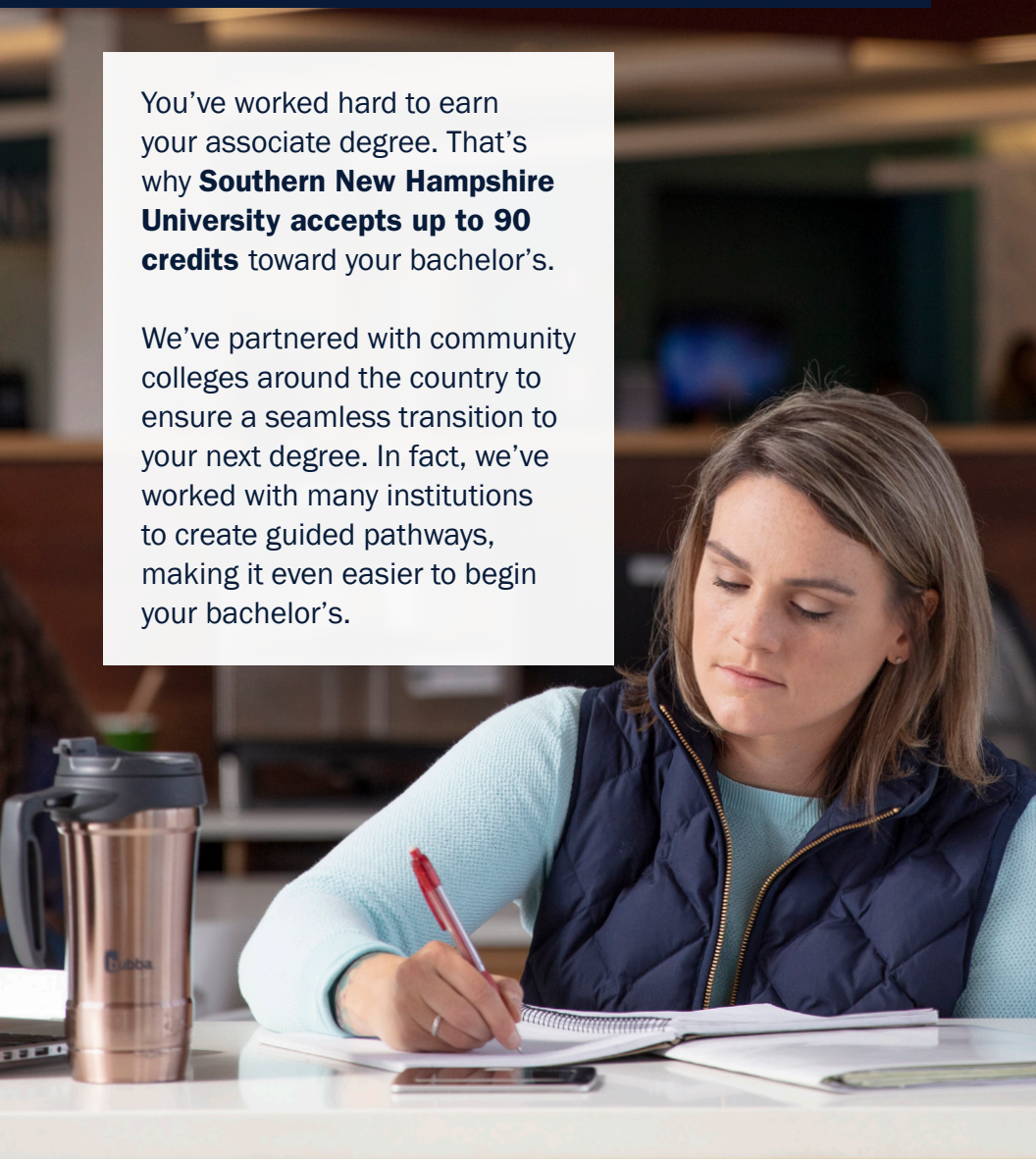
You're going places.  
And SNHU can help you get there.

# ACCELERATE TOWARD YOUR GOALS

**WITH OUR TRANSFER-FRIENDLY POLICY**

You've worked hard to earn your associate degree. That's why **Southern New Hampshire University accepts up to 90 credits** toward your bachelor's.

We've partnered with community colleges around the country to ensure a seamless transition to your next degree. In fact, we've worked with many institutions to create guided pathways, making it even easier to begin your bachelor's.



# GO FURTHER

## FROM WHEREVER YOU ARE

When you earn your bachelor's degree at SNHU, **you'll discover just how convenient online learning is.** With 24/7 access to the classroom, you can balance work, life and your coursework – on your terms.

You'll make it easier on yourself having a flexible class schedule. There are no set class times at SNHU – only weekly deadlines – allowing you to learn when and where you do it best. It's the convenience you need to live the life that you want.



“The deciding factor for me was that **I just did not have the time to continue my education on campus** with my four children. I wanted a program that was closely related to my current degree plan and an institution that would take most – if not all – of my credits. I got all of these things from SNHU.”

REDEENNA BAKER

Allan Hancock College and SNHU graduate

# PAVE YOUR WAY

## WITH AN AFFORDABLE BACHELOR'S DEGREE

You made a strategic choice when you invested in an associate degree at your community college.

At SNHU, we believe that tuition for your bachelor's degree should be just as affordable.

### How can SNHU help save you money?

- One of the lowest online tuition rates in the nation
- A 10% tuition discount for alumni of our partner community colleges
- A free transfer credit evaluation, which includes retrieving your transcripts for you
- No application fee



The median weekly earnings for those who've earned a bachelor's degree over an associate degree jumps 40%.\*

SNHU offers programs that can take you where you want to go – including 100+ bachelor's degrees from an accredited institution designed to meet workforce needs.

Build off your associate degree in sought-after fields:

**BUSINESS**

**STEM**

**NURSING & HEALTHCARE**

**LIBERAL ARTS**

**CRIMINAL JUSTICE**

**SOCIAL SCIENCES**

Most of SNHU's online degree programs offer concentrations, allowing you to specialize your professional focus and gain a leg up on the competition.

# FURTHER YOUR GROWTH

**WITH A CAREER-FOCUSED BACHELOR'S**

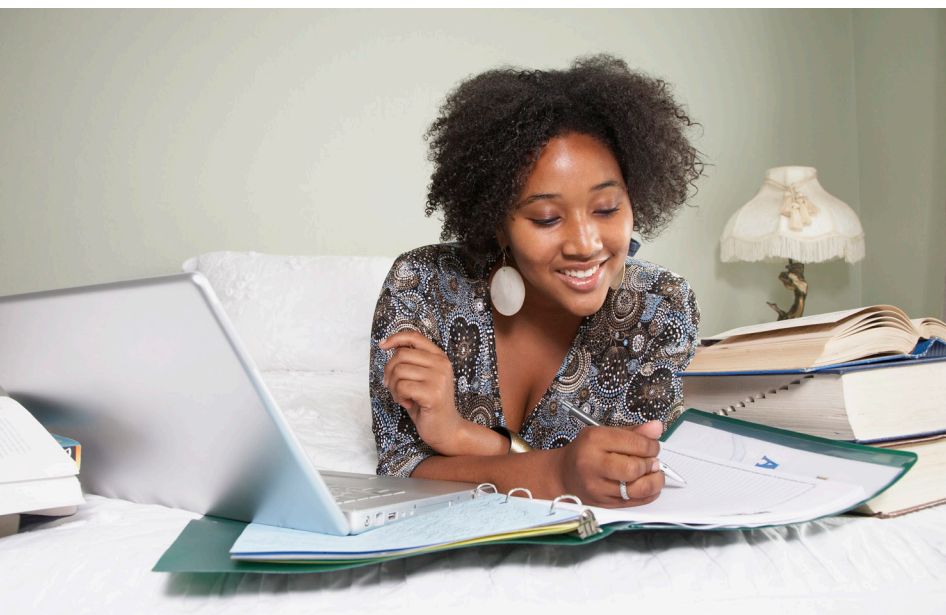


# NAVIGATE YOUR COURSES AND CAREER

**WITH AN ENTIRE TEAM TO SUPPORT YOU**

Help is just a click or call away. Take advantage of our student services, designed to move you closer to your career goals.

Wherever you are in the world, you'll experience the feeling of support you need from a community that has your back. We designed our resources to help you get where you want to go – from day one to graduation and beyond.





### **ACADEMIC ADVISING**

Get help developing an academic plan and more info on your classes



### **SNHUconnect**

Private online community for clubs, academic support and connections



### **CAREER ADVISING**

Personalized and on-demand resources to help you reach your goals



### **TECHNOLOGY HELP DESK**

24/7 virtual support wherever you are in the world



### **ONLINE ACCESSIBILITY CENTER**

Accommodations assistance for documented disabilities



### **TUTORING SERVICES**

Personalized 1:1 sessions, peer tutors and professional coaches available



**“As a student, a mother, a wife and an employee, SNHU made me feel that I had the resources to finish each course successfully.”**

**MARIA TORRES**

Chaffey College and SNHU graduate



# CONTINUE YOUR EDUCATION. ADVANCE YOUR CAREER.

Request information today at  
**snhu.edu**

**ABOUT SNHU** Southern New Hampshire University (SNHU) is a private, nonprofit, accredited institution with more than 3,000 on-campus students, over 130,000 online students and an alumni network of more than 100,000, making it one of the fastest growing universities in the nation. Since 1932, SNHU has aimed to meet the needs of our students and the workforce, offering over 200 undergraduate, graduate and certificate programs that keep pace with new technologies and professional requirements. Recognized as a “Most Innovative” regional university by U.S. News & World Report, SNHU continues to reinvent affordable, accessible higher education.

\*<https://www.bls.gov/emp/chart-unemployment-earnings-education.htm>



# Undergraduate Programs and Courses



## Academic Alliance

# Tuition Costs

SNHU's College of Online and Continuing Education gives students access to course work and degree programs that set a new standard for quality and affordability. The partnership between your institution and Southern New Hampshire University, albeit Academic or Corporate, provides a 10% tuition reduction for all qualified individuals.

## Undergraduate Pricing\*

Standard Tuition Cost Per Course	\$960
Your Academic Alliance Cost Per Course	\$864
U.S. Military Servicemembers and Military Spouses Cost Per Course	\$675

\*Tuition is subject to change. Must meet eligibility requirements.

Southern  
New Hampshire  
University

Southern New Hampshire University  
888.607.8374 | [www.snhu.edu](http://www.snhu.edu)  
[enroll@snhu.edu](mailto:enroll@snhu.edu)

# Graduate Programs and Courses



## Academic Alliance

# Tuition Costs

SNHU's College of Online and Continuing Education gives students access to course work and degree programs that set a new standard for quality and affordability. The partnership between your institution and Southern New Hampshire University, albeit Academic or Corporate, provides a 10% tuition reduction for all qualified individuals.

## Graduate Pricing\*

Standard Tuition Cost Per Course	\$1,881
Your Academic Alliance Cost Per Course	\$1,693
U.S. Military Servicemembers and Military Spouses Cost Per Course	\$1,410

\*Tuition is subject to change. Must meet eligibility requirements.

Southern  
New Hampshire  
University

Southern New Hampshire University  
888.607.8374 | [www.snhu.edu](http://www.snhu.edu)  
[enroll@snhu.edu](mailto:enroll@snhu.edu)