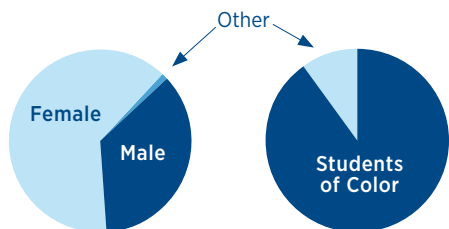


STUDENT NEEDS AND ENROLLMENT STATISTICS



Top Non-High School and Middle College Credit Programs (Fall 2023)

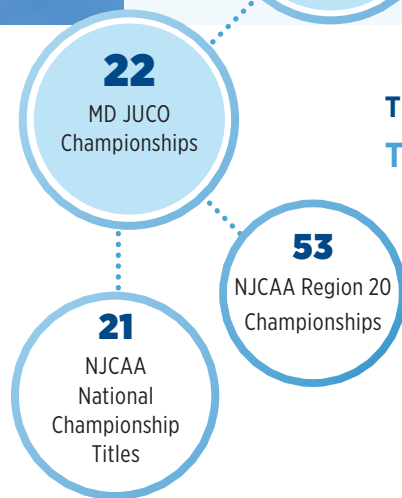
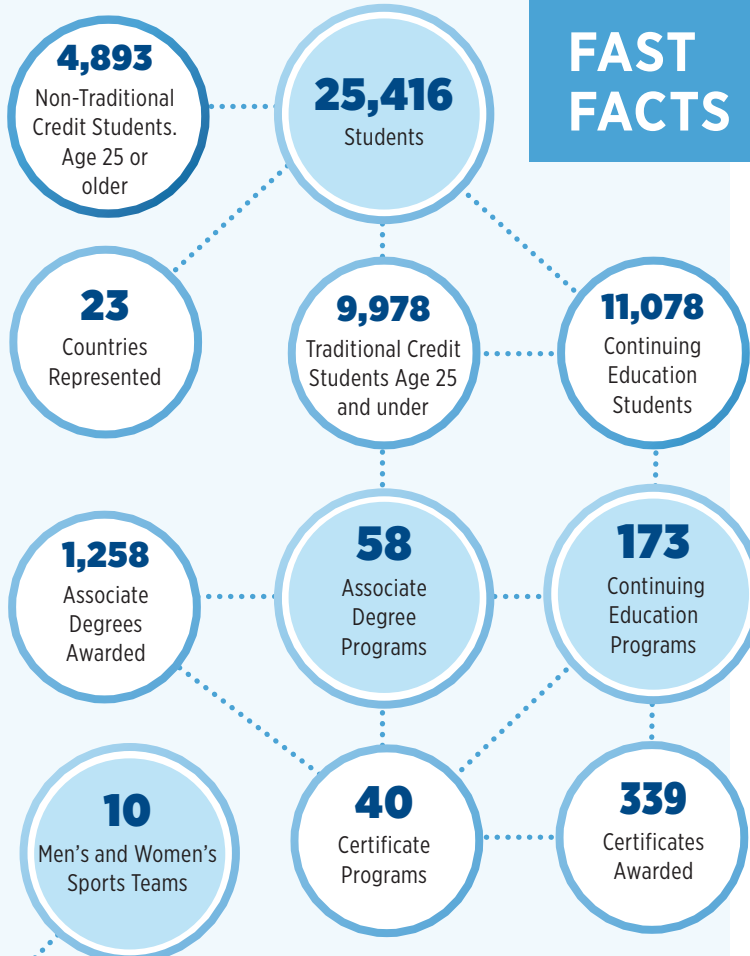
- Health Science, Associate of Science.
- General Studies, Associate of Arts.
- Business Administration, Associate of Science.
- Computer Science, Associate of Science.
- Cybersecurity, A.A.S.



Demographics (Credit Only)

Over **94.9%** Students of Color
36% Male, 63% Female, 1% Other

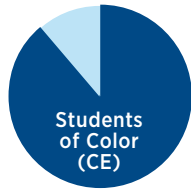
FAST FACTS



TOP FIVE TRANSFER INSTITUTIONS

- University of Maryland Global Campus
- University of Maryland College Park
- Bowie State University
- Towson University
- Morgan State University

ADDITIONAL INFORMATION



Demographics (Continuing Education Only)

Over **87.9%** Students of Color

81.9% Students 25 years or Older

1,194 CE students received

1,288 CTE certificates



Organizations and Clubs Registered in Fall 2023 Include:

- African Student Association
- Campus Activities Board
- Chess Club
- Clay Club
- Culinary and Hospitality Club
- Definitive Models Entertainment
- Future Health Professionals Club
- Hacker Space
- Kaleidoscope
- Muslim Student Association
- Nursing Club
- National Society of Collegiate Scholars
- National Society of Leadership and Success (NSLS)
- Owl Student Newspaper
- Owl Success Squad Ambassadors (OSSA)
- PGCC Gaming Club
- PGCC Music Club
- PGCC NAACP
- PGCC Star Fellowship
- Reflections Literary Magazine
- Service Members to Scholars (S2S)
- Veterans Club
- Student Research Club
- Universal Fitness
- Women in Cyber Security (WiCys)

24
Student Clubs and Organizations

Change in median income for occupational program graduates

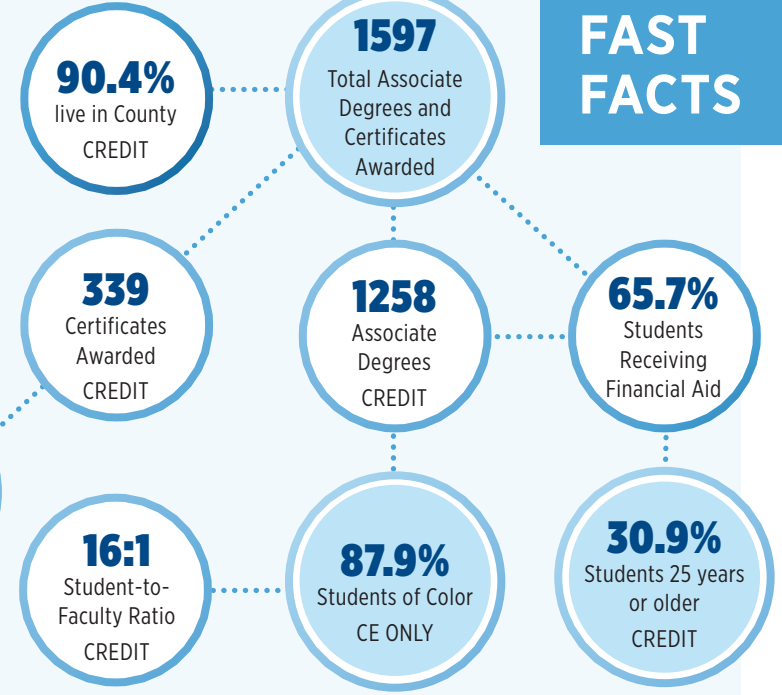
1 year before graduation:

\$23,456

3 years after graduation:

\$56,744

FAST FACTS



1,194 CE students received **1,288** CTE certificates.

Credit Students: **14,871** (TOTAL)
Non-Credit Students: **11,078** (TOTAL)

TUITION AND FEES

In-County: **\$3,914**

Out-of-County: **\$6,194**

Out-of-State: **\$8,642**